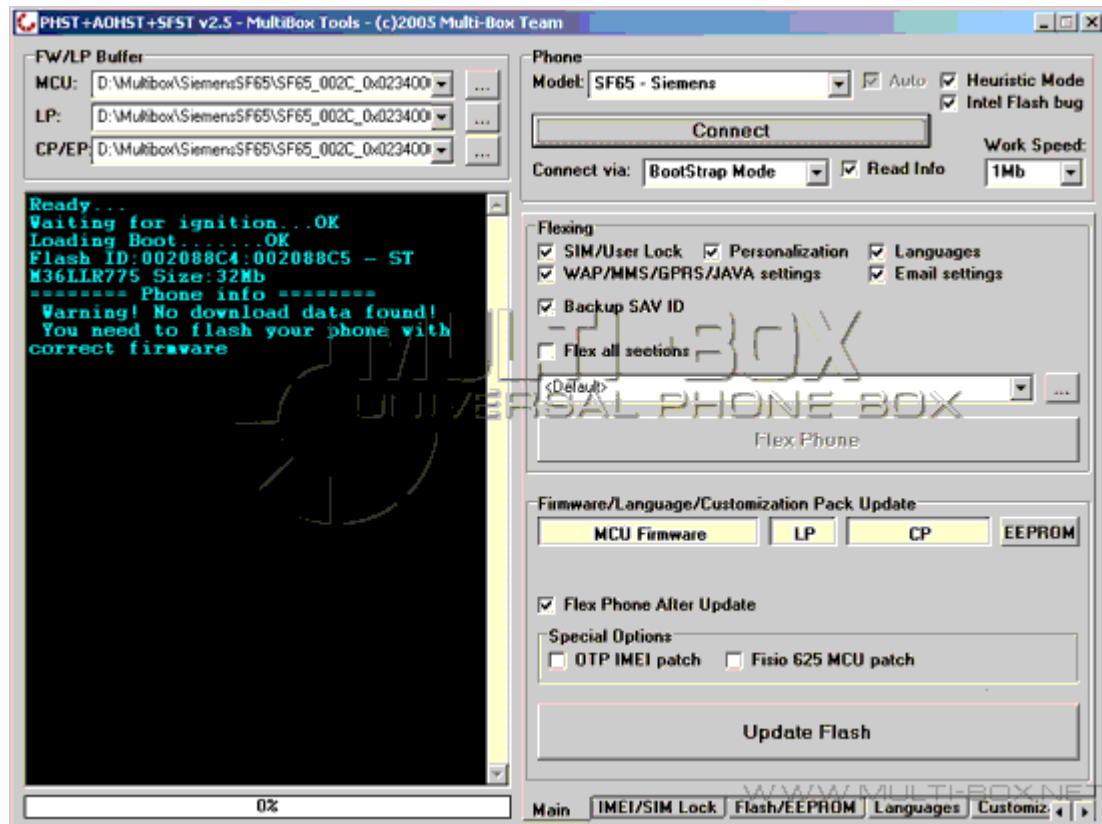


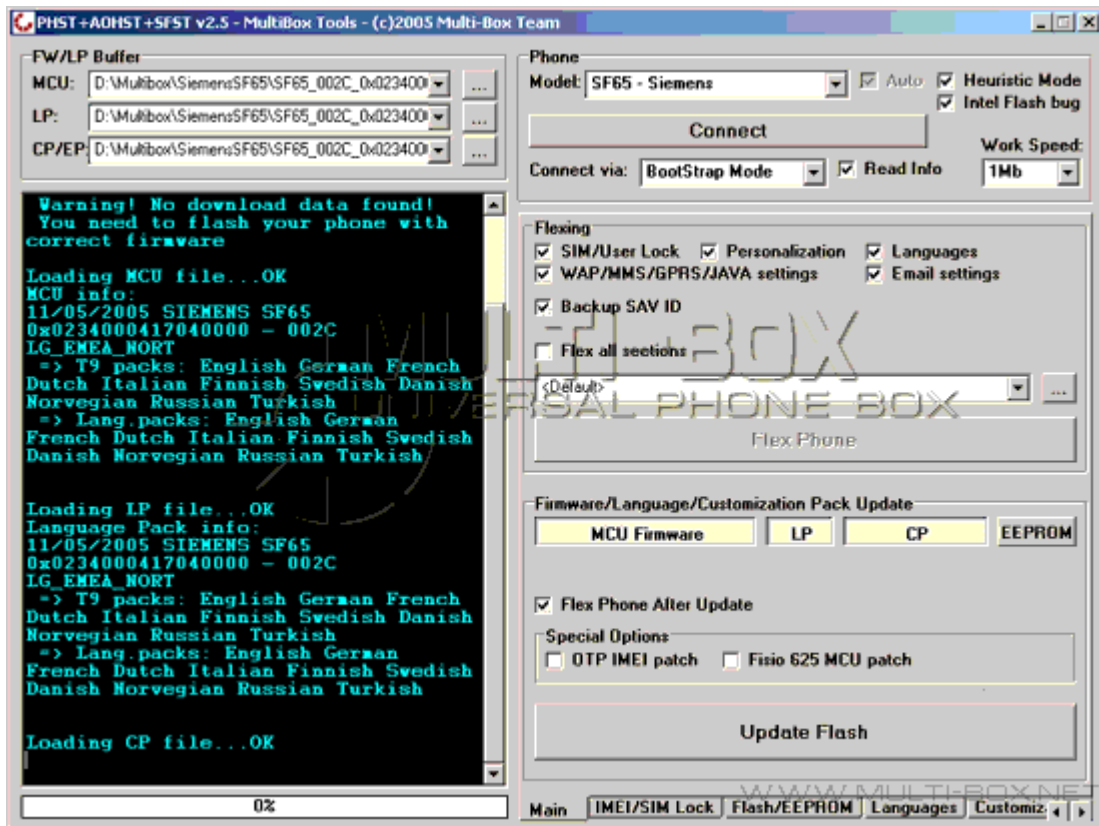
How to flash Siemens SF65 in Bootstrap mode?

1. Take the Multi-box and connect it to USB-port of PC using the USB cable.
2. Start the PhilipsAlcatelSiemens service tool of the latest version. The necessary socket will began blinking at the same moment - this must be one called "UNI".
3. Take the cable with RJ 45 socket on one end and with 8 wires on the other one. For this you should go to support area and download .jpg files with Multi-box pinout and test points of Siemens SF65. You must open your phone and solder to the board. Insert it to the **blinking socket**.
4. Choose the necessary model from the list in the "Main" window (in the given case this is Siemens SF65 and mode of work - Bootstrap mode).
5. Press "Connect" in the "Main" window of the program and push for a few seconds (3-4 sec) "power on" button on the phone. Programm will read all the info and show what is locked and what firmware and language pack is in the phone (in the given case phone is dead).

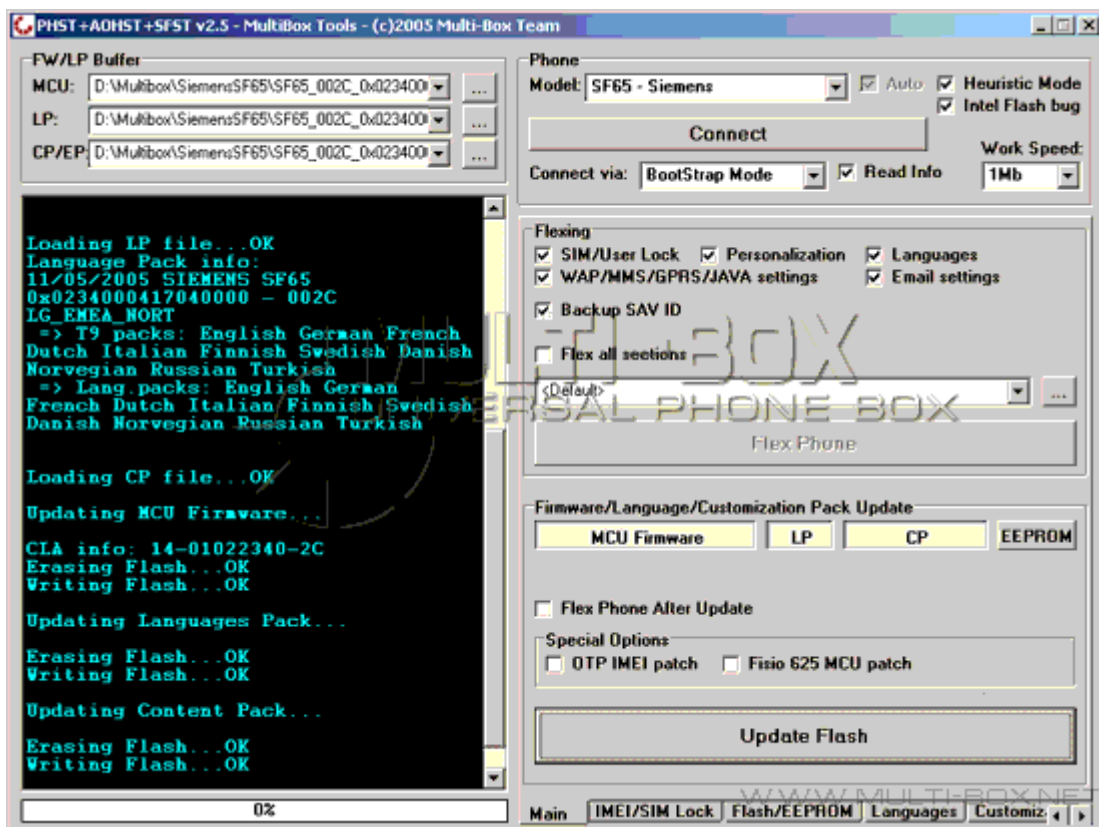


Let's consider that we need to write new firmware with Russian language.

6. Stay in the "Main" window. In the section FW/LP Buffer load MCU - SF65_002C_0x0234000417040000_LG_EMEA_NORT.pfw, LP - SF65_002C_0x0234000417040000_LG_EMEA_NORT.plp, CP/EP - SF65_002C_0x0234000417040000_LG_EMEA_NORT.cus.

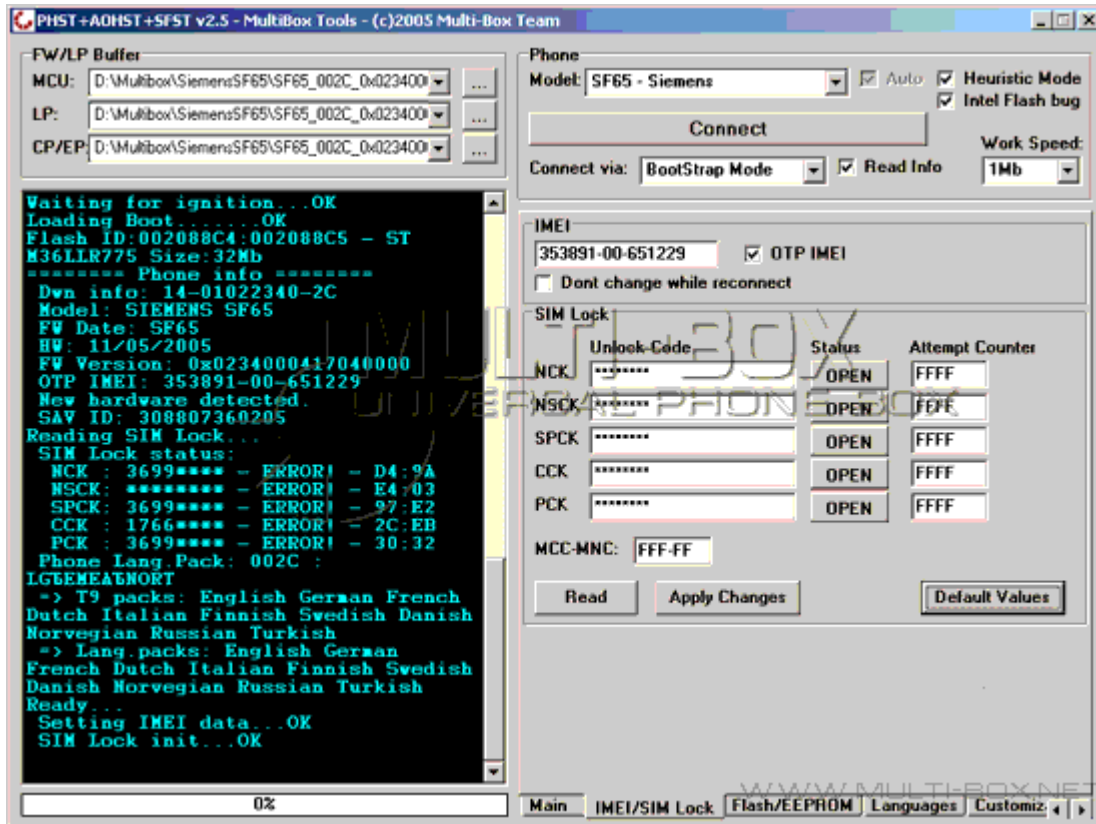


And press "Update flash". Programm will write "Reconnect the bettary, press "OK" and then press power on (again for 3-4 seconds)" - **do this - always do what program says**. Flashing began. Now don't do anything - don't even move mouse - because our software take all the resources of RAM and programm can hang. It happend when I flashed this phone - programm seemed not to work - but I waited for 5 minutes and the phone was flashed.

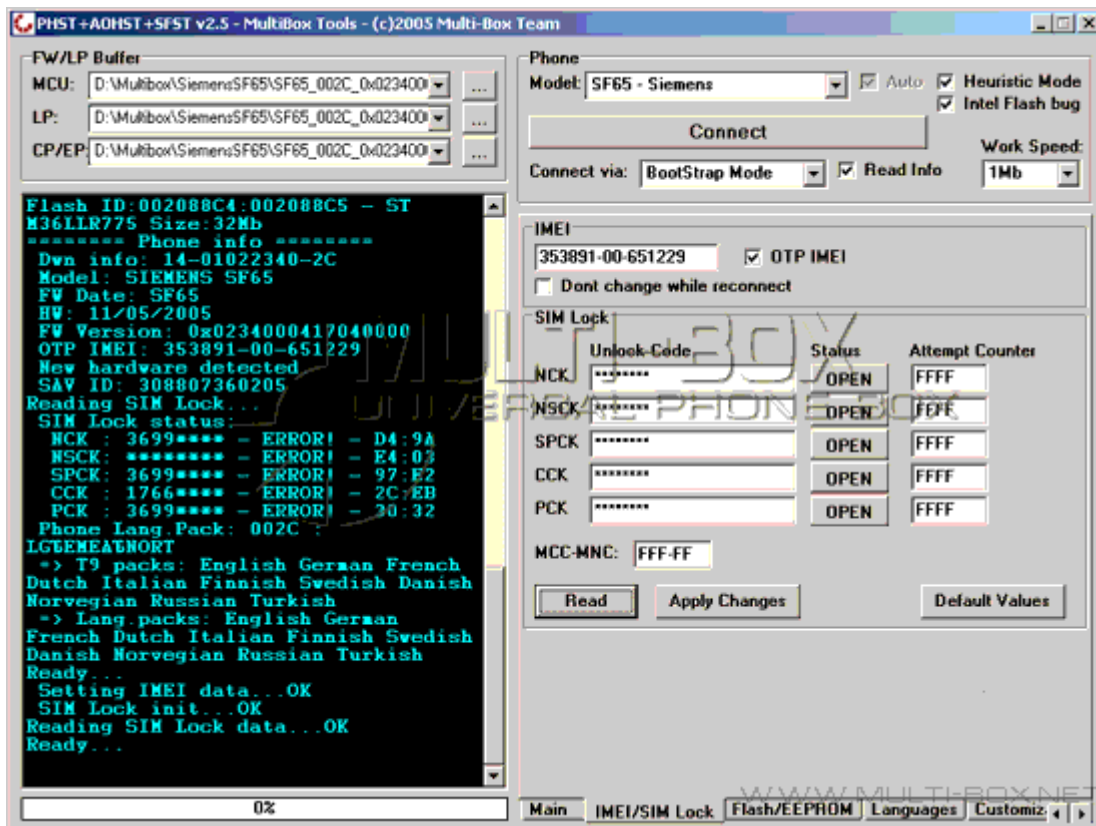


7. Now you need to check if the phone is really flashed and not locked again. Reconnect the bettary, press "Connect" and push for a few seconds (3-4 sec) "power on" button on the phone. Program can

show next...



It means that phone is locked, you need to go to "IMEI/SIM Lock" section. Press "Default values". Press "Read" to check if the phone is unlocked.



Enjoy your phone.

PS - Don't be scared if you see some error, you are not a baby;) - don't be lazy and try to find out what's wrong.