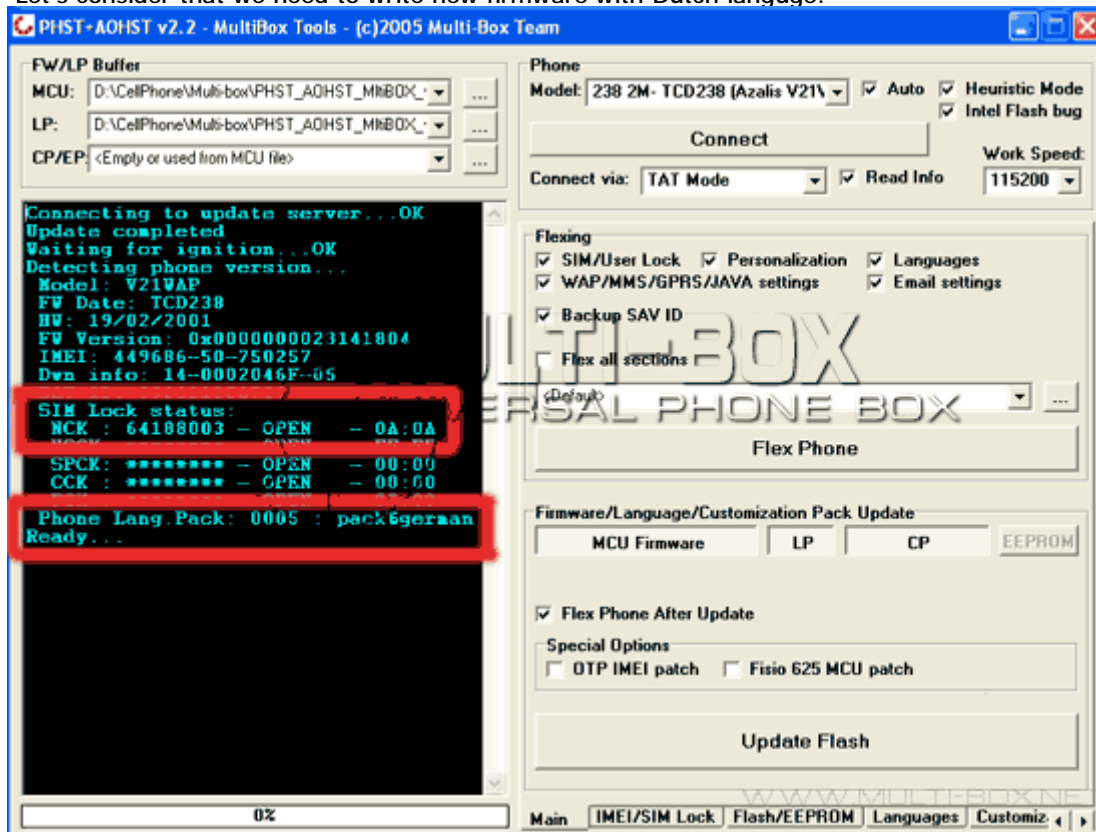


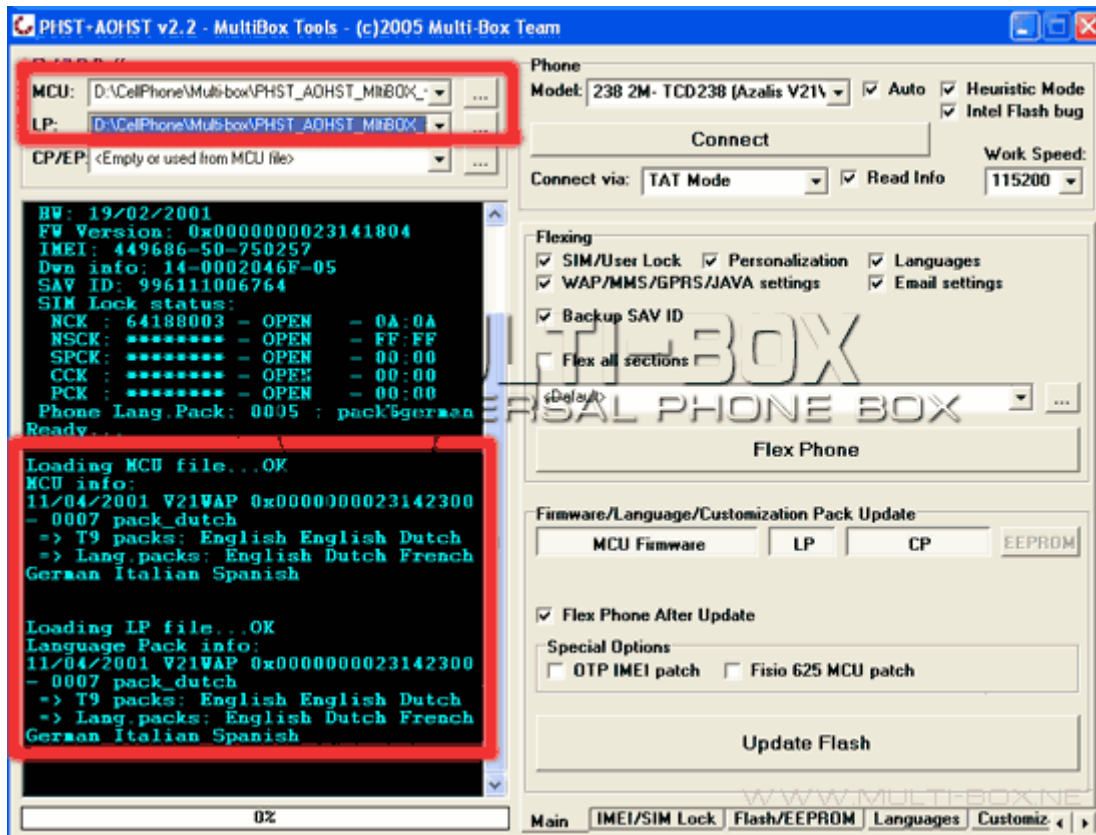
How to flash Philips in TAT Mode

We used Philips Azalis 238 for this example.

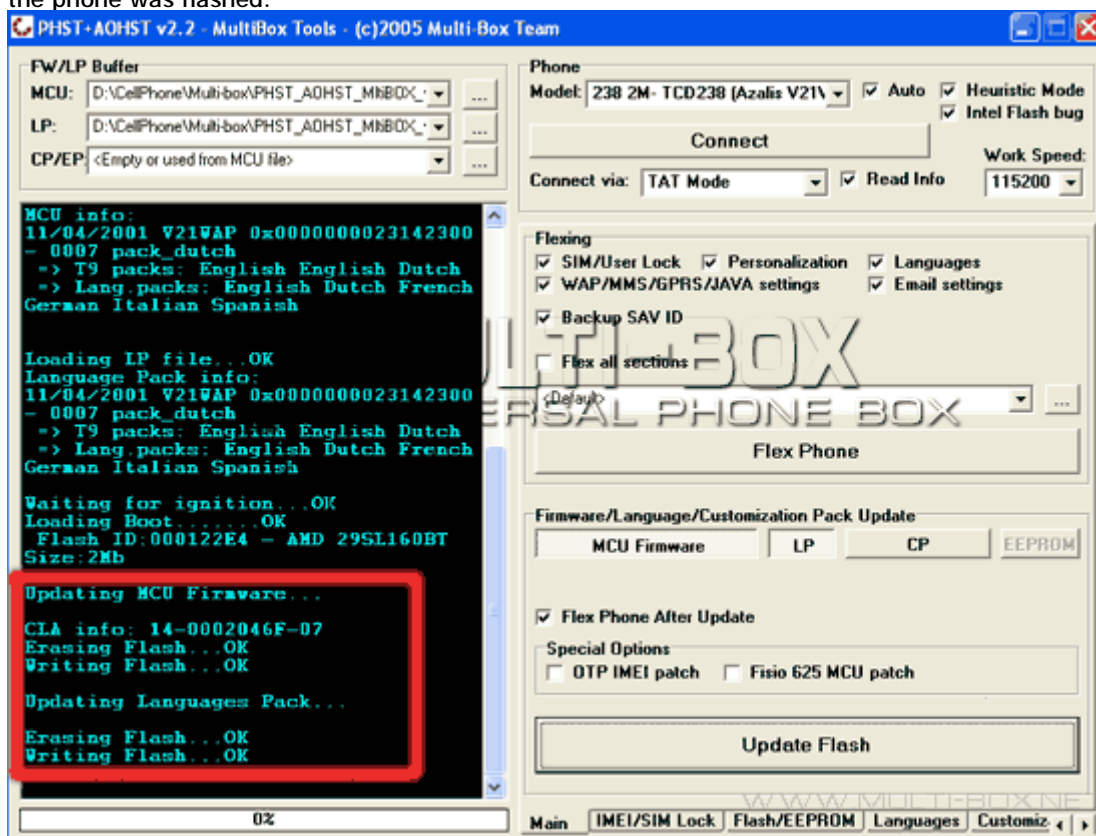
1. Take the Multi-box and connect it to USB-port of PC using the USB cable.
2. Start the Philips and Alcatel service tool of the latest version. The necessary socket will began blinking at the same moment - this must be one called "UNI".
3. Take the cable for Philips FISCO, insert it to the blinking socket and then connect cable to your phone.
4. Choose the necessary model from the list in the "Main" window (in the given case this is 238 2M - it means with 2 MB flash, if you don't know which flash you have - try both of them by turns), choose the slowest speed of work "115200".
5. Press "Connect" in the "Main" window of the program and push shortly (for ~ 1 sec) "power on" button on the phone. Programm will read all the info and show what is locked and what firmware and language pack is in the phone (in the given case phone is unlocked phone and has German language). Let's consider that we need to write new firmware with Dutch language.



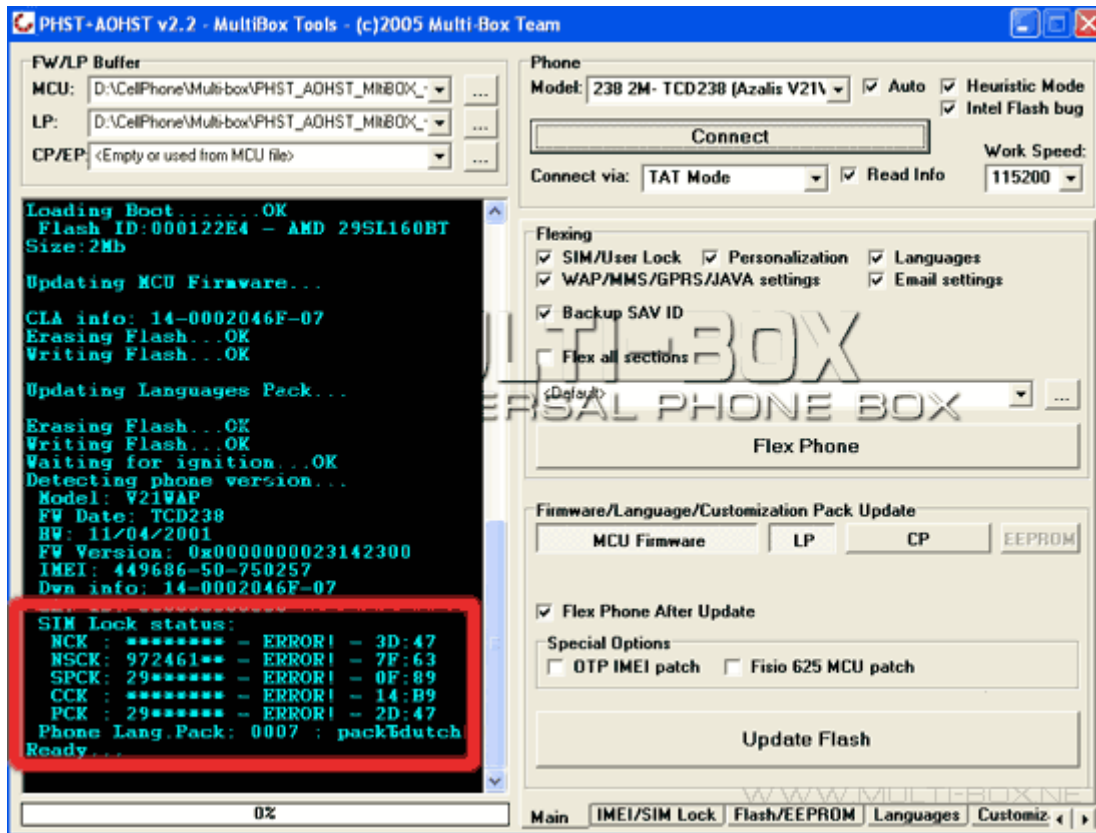
6. Stay in the "Main" window. In the section FW/LP Buffer load MCU - 238_2M_0007_0x0000000023142300_pack_dutch.pfw, LP - 238_2M_0007_0x0000000023142300_pack_dutch.plp. For this model you don't need to load customization pack.



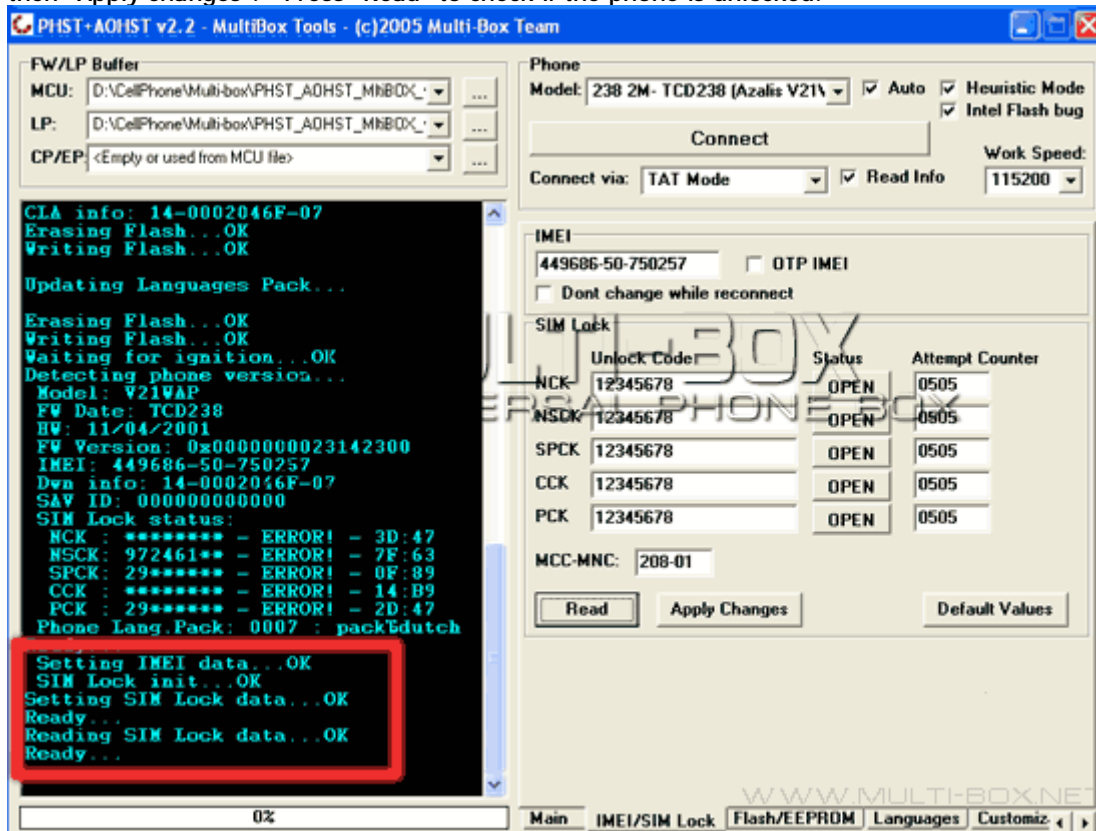
And press "Update flash". Programm will write "Reconnect the bettary, press "OK" and then press shortly power on" - do this - always do what program says. Flashing began. Now don't do anything - don't even move mouse - because our software take all the resources of RAM and programm can hang. It happend when I flashed this phone - programm seemed not to work - but I waited for 5 minutes and the phone was flashed.



7. Now you need to check if the phone is really flashed and not locked again. Reconnect the bettary, press "Connect" and push shortly (for ~ 1 sec) "power on" button. Program can show next



It means that phone is locked, you need to go to "IMEI/SIM Lock" section. Press "Default values" and then "Apply changes". Press "Read" to check if the phone is unlocked.



Enjoy your phone.

PS - Don't be scared if you see some error, you are not a baby;) - don't be lazy and try to find out what's wrong.